

FALL 2023

# retrofit

# Home

## All Aboard:

A 1916 Train Caboose Finds  
New Life as a Hospitality Showpiece  
in the Smoky Mountains

**DESIGN** *vibes*

Importance of  
Air Sealing

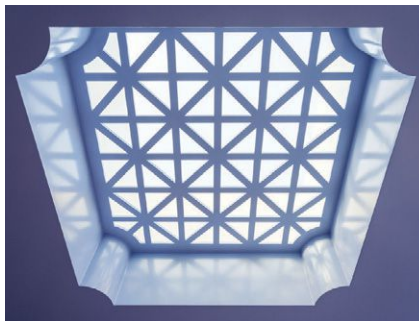
# ROOM *reveal*

## THE JEWEL OF THE HOME

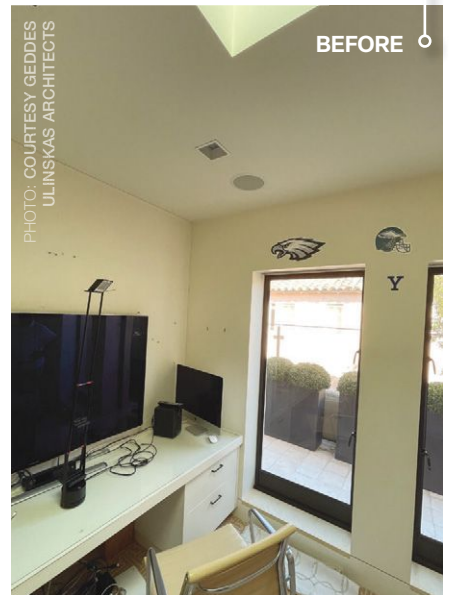
A WFH Space Reveals a Feminine Touch



PHOTOS: BLAKE MARVIN unless otherwise noted.



AFTER



BEFORE


PHOTO: COURTESY GEDDES ULINSKAS ARCHITECTS

Following this San Francisco home's minimalist renovation 15 years ago, the homeowner, who now works from home, found herself longing for more traditional sensibilities in her office. Yearning for a softer touch, she entrusted Geddes Ulinskas Architects to revive the 120-square-foot room to create a spirited workday haven. In a three-month renovation, Geddes Ulinskas Architects transformed the tight and bland space into the bright and lively home office of the client's dreams.

The existing skylight is softened with scalloped corners and an ornamental lattice grid for a classic touch. A rich, high-gloss purple finish washes over the traditional crown mouldings from floor to ceiling, reinforcing the elegant style and further reflecting the space's

incredible natural light. Purple is often associated with royalty, and this lilac hue exudes elegance and femininity. According to [www.colorpsychology.org](http://www.colorpsychology.org), lilac helps improve emotional expression and fosters confidence to go against the crowd.

Together with the glossy monochrome purple paint, white wall-to-wall carpeting helps augment the office's footprint. The grand desk adds another luxe touch while the abstract Claude Lawrence painting provides an extra dose of inspiration. Throughout, built-in shelving and custom drawers offer storage and another feminine touch with soft, curved faces.

In response to the homeowner's appetite for traditional elements, Geddes Ulinskas Architects successfully transformed this WFH space into the jewel of the home. 

### *Retrofit Team*

**ARCHITECT AND INTERIOR DESIGNER** || Geddes Ulinskas Architects, [www.ularch.com](http://www.ularch.com)

**GENERAL CONTRACTOR** || Upscale Construction, [www.upscaleconstruction.com](http://www.upscaleconstruction.com)

**CABINETMAKER** || Silver Strand Inc., [silverstrandmillwork.com](http://silverstrandmillwork.com)

**CABINET FINISHING** || Swift Finishing Inc., [www.swiftfinishing.com](http://www.swiftfinishing.com)

**PAINTING** || Michael Craven Painting, [www.michaelcravenpainting.com](http://www.michaelcravenpainting.com)

### *Materials*

**PAINT** || Oriental Iris from Benjamin Moore, [www.benjaminmoore.com](http://www.benjaminmoore.com)

**DESK** || Restoration Hardware, [rh.com/us/en](http://rh.com/us/en)